

St. Brigid's Primary School, Altamuskin



Prospectus 2017





Principal: Sinéad Gormley

St. Brigid's Primary School,

114 Altamuskin Road,

Sixmilecross,

Co Tyrone BT79 9JA

E-mail: sgormley238@c2kni.net

Mob: 07980979390

Phone: 028 807 58386

Fax: 028 807 57711

Catholic Maintained

Co-Educational

Age Range 4-11

Number on Roll: 58

Admission No. 11

Capacity/Enrolment No. 80

Chair of the Board of

Fr M.O'Dwyer

FURTHER INFORMATION

The Board of Governors of St. Brigid's Primary School realise that the information given in this prospectus is limited and parents are welcome to make arrangements with the principal to visit the school for further information. Copies of previous inspection reports and curriculum policies are available in the principal's office.

**School Text service keeping you up to date
with daily events and activities:**

07980979390

[Check out our School Website](http://www.stbrigidspsaltamuskin.com)

www.stbrigidspsaltamuskin.com

Or just 'Google'; Altamuskin



Welcome/ Fáilte



Welcome to St. Brigid's Primary School Altamuskin. We are a rural primary school, situated in the townland of Altamuksin, in the Parish of Errigal Ciaran. The school is committed to the aims, values and teachings of a truly Christian community.

St Brigid's is a vibrant and dynamic school which seeks excellence in all it strives to do in keeping with the Catholic ethos and with the full participation of Governors, Staff, Parents and Pupils.



The Principal

Mrs. Gormley



General Information about the school

St.Brigid's Primary School, Altamuskin is a Catholic Maintained School, situated in the parish of Errigal Ciaran. The school consists of the primary sector and has 3 composite classes. P1, P2 and P3 are together, P4 and P5 together and then P6 and P7 are together.

There is a large secure outdoor play area which is enclosed by the school itself.

There is also a large tarmac area for older pupils, as well as grassy areas for outdoor play and games, especially for during break and dinner times.

We are fortunate at present to be part of a 12 school cluster group who meet regularly to share good practice and our children benefit from this involvement. The schools involved are co-educational and so this will help us work towards a shared education outlook for the future.



OUR STAFF:

Mrs Gormley/ Miss Mallon	P1/2/3
Miss Mc Gorry	P4/5
Miss Mc Nulty	P6/7
Julianne O'Neill	Secretary
Majella Gormley	Caretaker
Mary Donnelly	Classroom Assistant
Julianne O'Neill	Classroom Assistant
Josie Conroy	Lunch Time Supervisor
Anna Mc Cann	Catering Assistant



Attendance Rate 2015/16:

Children's overall school attendance: 96.3%

NI average 95%

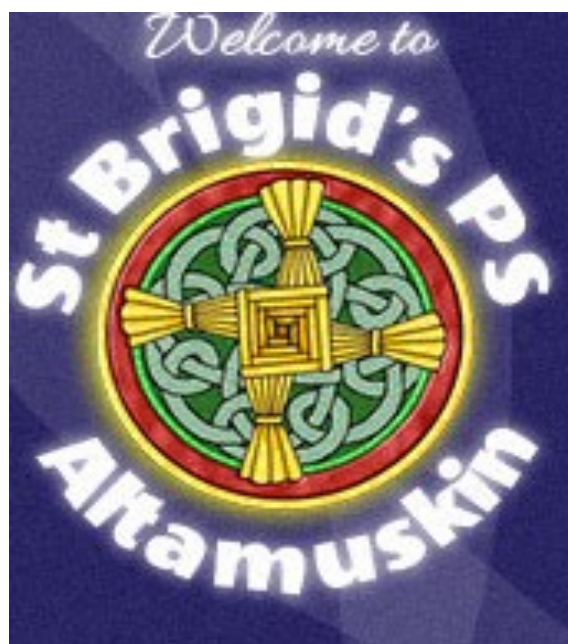
Board of Governors

Please note Fr O Dwyer is the Chairman of the Board of Governors. He is also the Parish Priest of Errigal Ciaran.

Board of Governors:

The Board of Governors has overall responsibility for the managing and functioning of the school. The Governors meet regularly and take an active interest in and support the work of the school.

Governor Name	Representing
Fr. Michael O'Dwyer	Trustee and Chairman
Peter Horisk	Trustee
Sharon Quinn	Trustee
Kevin Conroy	Trustee
Michelle Mc Crystall	DENI
Sean Donnelly	EA WR
Rosemarie Shields	EA WR
Shauna Mc Elholm	Teachers
Kelly Mc Crory	Parents
Sinéad Gormley	Principal



Charging and Remissions Policy

In line with the requirements of the Northern Ireland Education Reform Order 1989, it is the policy of the Board of Governors to:

- maintain the right to free school education for all pupils:
- establish that activities organised wholly or mainly during school time should be available to all pupils:
- require parents to pay charges for board and lodging for their children, on residential trips, taking account of any relevant remission arrangement:
- confirm its right to invite voluntary contributions for the benefit of the school or in support of activities organised by the school:
- make charges in respect of optional extras, as determined by the Board of Governors.

Admissions criteria for entry September 2017

St Brigid's Primary School
114 Altamuskin Road
Sixmilecross
Omagh
BT79 9JA

Catholic Maintained
Co-Educational
Age Range 4-11
Roll: 58

Tel/Fax No: 028 8075 8386
E-mail: sgormley238@c2kni.net

Principal: Ms Sinéad Gormley

(Previous Chair)
Chair of Board of Governors: Miss Carmel O'Meara

Admissions No: 11

Enrolment No: 80

Respective functions of the Board of Governors and Principal in relation to admissions. If it becomes necessary to apply the criteria, in the event of the numbers applying for admission being greater than the permitted numbers, a panel consisting of the Principal and at least two other Governors will select the pupils to be admitted.

The Board of Governors of St Brigid's Primary School, Altamuskin have decided that the following criteria will apply in the order set down 1-2 in selecting pupils for admission to Year 1 in September in the event of the numbers of pupils applying for places in Year 1 being greater than the admission number. Priority will at all times be given to pupils regarded by the Board of Governors, on the basis of supporting evidence by parents and/or statutory agencies, as having special circumstances, (medical, social or security reasons). Priority shall be given to children resident in Northern Ireland.

ADMISSIONS CRITERIA – YEAR 1

- 1 Children of compulsory school age who traditionally reside in those parts of the Parish of Errigal Ciaran known as Lurganbuoy, Dunmoyle, Altamuskin, Foremass and Fallagherin.
- 2 Children of compulsory school age from Cloughfin area of Beragh Parish.

In the event of over-subscription in any one of the criteria, taken in order, the following Sub-Criteria will be applied in the order set down. If over-subscribed in any one of the Sub-Criteria, taken in order, final selection will be on the basis of closeness of the home to the school as measured by the shortest walking distance.

- (a) Children who have brothers/sisters, (half-brother/sister) presently enrolled in the school.
- (b) Children whose parent/guardian, brother/sister, (half-brother/sister) are prior pupils of the school.
- (c) Children whose parent/guardian is presently a permanent member of the school teaching/ancillary staff.

YEAR 1 ADMISSIONS – AFTER THE BEGINNING OF THE SCHOOL YEAR

Children who apply to enter the school during the academic year will be considered using the same criteria as for Year 1.

ADMISSIONS CRITERIA – YEARS 2-7

The following criteria will be applied by the Board of Governors of St Brigid's Primary School when selecting children for admission to Years 2-7.

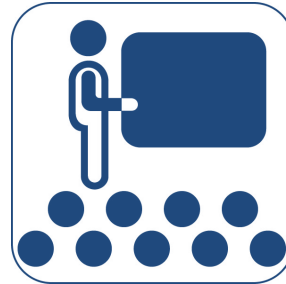
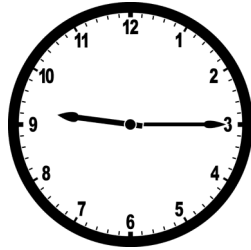
- 1 Children who traditionally reside in the Parish of Errigal Ciaran known as Lurganbuoy, Dunmoyle, Altamuskin, Foremass and Fallagherin.
- 2 Children from the Cloughfin Area of Beragh Parish.
- 3 Children from other areas when our enrolment number is less than 80.

Applications and Admissions to Primary 1		
Year	Total Applications	Total Admissions
2014/2015	5	5
2015/2016	10	10
2016/2017	4	4

School day

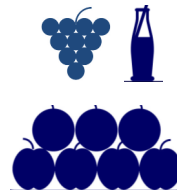
Start

9.15am



Break

10.35am



Lunch

12.15pm



Home

P1,2 (2pm)

P3,4,5,6,7 (3.15pm)



What I need

School Uniform:

The school uniform consists of:

BOYS - White Shirt, Navy Trousers,
School Jumper, School Tie

GIRLS - White shirt, Navy Skirt/
Pinafore, School Jumper, School Tie



Schoolbag +
Pencil case:



Toilet



‘May I go to the
toilet, please?’



Girls' toilet



Boys' toilet

Healthy Break

You can eat:



or



You can drink:

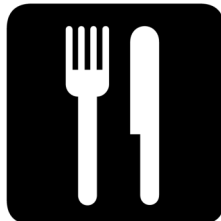


or



You can buy milk for 21p per day.

School dinners



£2.55 each day

£12.75 for a week

OR

Bring a packed lunch

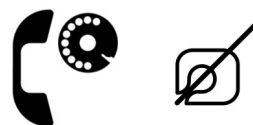


School rules

1. Children must be in school at 9.15am

2. Children must go to school every day. Monday → Friday

3. If your child is not at school you must telephone or write to the school.



4. If you want to take your child out of school you must telephone or write

5. Give the teacher names of adults who come to the school to collect children.

Name?

6. Put your child's name on bags and clothes.



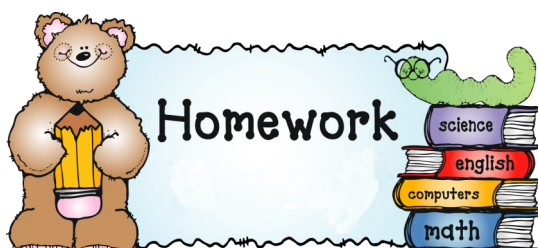
7. Children have homework on 4 nights:

Monday

Tuesday

Wednesday

Thursday





SCHOOL DISCIPLINE

The school actively promotes positive behaviour. The emphasis of this policy is on rewarding good behaviour. Our school discipline policy is based on the school's Christian values and beliefs. We aim


- ♦ To provide a supportive environment which will foster the growth and,
- ♦ Development of caring and responsible pupils.
- ♦ To create a well-ordered school in which pupils can learn effectively.
- ♦ To develop in our pupils a sense of self-worth and self-control.

We expect all our school community to act in a positive and caring way towards each other. To this end we have some school rules for our pupils, which we will implement fairly and consistently.

We require our pupils:

- ♦ To be punctual for all school activities.
- ♦ To respect their own, and other's property.
- ♦ To be given permission before being excused from class.
- ♦ To play fairly and for enjoyment.
- ♦ To wear school uniform.
- ♦ To move through the school quietly and in order.

School rules are displayed on the pupils' noticeboard, and the children, through negotiation, set the rules within each classroom. If the rules are broken then a series of sanctions are applied. Before behaviour becomes a problem, parents will be informed and their help sought. The school also has an anti-bullying policy, which runs alongside the other pastoral policies.



The Primary Curriculum

All pupils have full access to the Northern Ireland Curriculum which is primarily concerned with removing the early experience of failure and the promotion of children's self-esteem by concentrating on activities and learning experiences which encourage confidence, curiosity and creativity. It encourages children to take responsibility for their own learning.

The Primary Curriculum is set out in Seven Areas of Learning:

The seven learning areas in the Curriculum are:-

- **Language and Literacy**
(including Talking and Listening , Reading and Writing);
- **Mathematics and Numeracy**
(focusing on the development of mathematical concepts and numeracy across the curriculum);
- **The Arts**
(including Art and Design, Drama and Music);
- **The World Around Us**
(focusing on the development of knowledge , skills and understanding in Geography, History and Science and Technology);
- **Personal Development and Mutual Understanding**
(focusing on emotional development, social skills, learning to learn , health, relationships and sexuality education and mutual understanding in the local and global community);
- **Physical Education**
(focusing on the development of knowledge, skills and understanding through play and a range of physical activities)
- **Religious Education**
(focusing on faith development, including biblical stories)

At the heart of the curriculum lies an explicit emphasis on the development of skills and capabilities for lifelong learning and operating effectively in society. Through opportunities to engage in active learning contexts across all areas of the curriculum children will progressively develop:

Cross Curricular Skills:

- Communication
- Using Mathematics
- Using Information and Communications Technology (*Acceptable use of Internet & Digital Technologies in Schools Policy on our website—Key Information/Pastoral Care)

Thinking Skills and Personal Capabilities:

- Thinking, Problem Solving and Decision Making
- Self Management
- Working with Others
- Managing Information
- Being Creative



Our Approaches to Learning and Teaching in the Primary Curriculum

- Children learn best when learning is interactive, practical and enjoyable.
- Teachers will make use of a wide range of teaching methods, balancing whole class, group and individual activities, to engage children in effective learning.
- Children will experience much of their learning through well-planned and challenging activities.
- Children will have opportunities to make choices and decisions about their learning.
- Children are given equality of opportunity to learn in a variety of ways and in different social groupings.

Teachers plan together each week and agree on clear learning intentions which are shared with the pupils. Work is carefully reviewed and evaluated. Assessment: procedures, formal and informal, are used to evaluate the teaching and learning process.

Month	Mon	Tue	Wed	Thu	Fri	Sat	Sun
Aug 2016	29	30	31	1 School Reopens	2	3	4
Sep 2016	5	6	7	8	9	10	11
	12	13	14	15	16	17	18
	19	20	21	22	23	24	25
	26	27	28	29	30	1	2
Oct 2016	3	4	5	6	7	8	9
	10	11	12	13	14	15	16
	17	18	19	20	21	22	23
	24	25	26	27	28	29	30
Nov 2016	31 Opt 1	1 Opt 2	2 Opt 3	3	4	5	6
	7	8	9	10	11	12	13
	14	15	16	17	18	19	20
	21	22	23	24	25	26	27
Dec 2016	28	29	30	1	2	3	4
	5	6	7	8	9	10	11
	12	13	14	15	16	17	18
	19	20 Half Day	21 Holiday	22 Holiday	23 Holiday	24	25
Jan 2017	26 Holiday	27 Holiday	28 Holiday	29 Holiday	30 Holiday	31	1
	2	3 SDD 1	4	5	6	7	8
	9	10	11	12	13	14	15
	16	17	18	19	20	21	22

Pupil Holidays

Academic Year

2016-17



=Children off school

One other staff development/training day (SDD) will be arranged during the school year.

We try, where possible, to synchronize our holidays with those of St. Ciaran's to facilitate families with children at both schools

Half Days – School finish at 11am.

Month	Mon	Tue	Wed	Thu	Fri	Sat	Sun
Feb 2017	30	31	1	2	3	4	5
	6	7	8	9	10	11	12
	13 SDD 2	14 SDD 3	15 Opt 4	16 Mid Term	17 Mid Term	18	19
	20	21	22	23	24	25	26
Mar 2017	27	28	1	2	3	4	5
	6	7	8	9	10	11	12
	13	14	15	16 Holiday	17 Holiday	18	19
	20	21	22	23	24	25	26
Apr 2017	27	28	29	30	31	1	2
	3	4	5	6	7	8	9
	10	11	12 Half Day	13 Holiday	14 Holiday	15	16
	17 Holiday	18 Holiday	19 Holiday	20 Holiday	21 Holiday	22	23
May 2017	24	25	26	27	28	29	30
	1 Holiday	2	3	4	5	6	7
	8	9	10	11	12	13	14
	15	16	17	18	19	20	21
Jun 2017	22	23	24	25	26	27	28
	29 Holiday	30 SDD 4	31	1	2	3	4
	5	6	7	8	9	10	11
	12	13	14	15	16	17	18

Active learning



Music lessons

We offer violin through the Education and library board music service. P4-7 children have the opportunity to learn traditional instruments with Miss Brodrick, including banjo, tin whistle and fiddle. We also have choral lessons and children have the chance to sing in Dunmoyle choir.

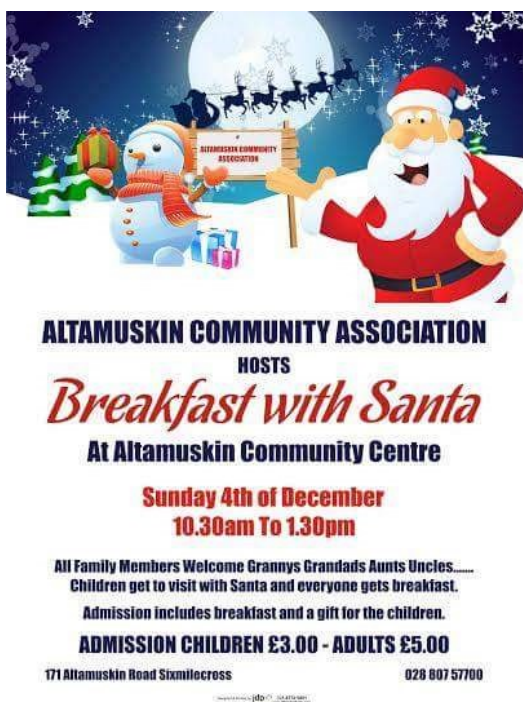


Outdoor learning

We love
Science
and
technology



Charitable activities in our local community...



ASSESSMENT

Children are continuously assessed using a variety of formal and informal testing.

Assessment for Learning is an integral part of the Revised Curriculum. We see assessment as an integral part of the learning process, as children are actively involved in their own learning. We ensure that children are given effective feedback which challenges and improves the quality of children's work as well as giving children an immediate and positive boost to their self-esteem. We also encourage children in the use of self-assessment so that they can improve their own. The school also tests children regularly to ensure that they are making appropriate progress. These tests are carried out systematically throughout the year. Records of attainment and progression are kept on each child. These are passed onto each successive teacher and are used to inform teacher's planning for the future needs of each child.

SPECIAL EDUCATIONAL PROVISION

Care is taken at all times to match the curricular provision for all children to their particular stage of development and to take account of any particular difficulties or special talents, which they show. As it is the intention of the school to maximise the potential of each pupil, the school will endeavour within its resources to meet these needs. To do this, procedures set out in the school's Special Needs Policy will be used. This policy is available for inspection from the school principal. The school is also currently compliant with the Special Education Needs & Disability Order 2005 (SENDO).

HEALTH EDUCATION (Including Drugs Education)

St. Brigid's is a caring, responsible school with the needs of the pupils being of paramount importance. We strive to respond to the personal, emotional, social and education needs of our pupils through our interaction with them in the classroom and beyond. As our health programme responds to need, we will include other issues when appropriate. This programme is delivered mainly through health education/PDMU/RE and the science curriculum. All other subjects contribute to this, where and when appropriate.

RELIGIOUS EDUCATION

The Catholic ethos permeates all aspects of school life in St Brigid's P.S Altamuskin. Religious Education is taught through the Grow In Love Programme.

Parents are encouraged to become involved in the preparation of their children for the sacraments of Reconciliation, Holy Communion and Confirmation.

The priests of the parish, Fr. O Dwyer and Fr Hackett, visit the school regularly.

Assessment Outcomes of the School

End of Key Stage Assessment Data June 2012

(NI comparative data is not available after June 2012 due to DENI review of Key Stage Assessments)

Key Stage 1

	English		Maths	
Level	2 or above	3 +	2 +	3 +
% of pupils in St Brigid's achieving	100.00		100.00	
Level	2 +	3 +	2 +	3 +
% of pupils in NI achiev-ing	93.57	40.40	64	46.76

Key Stage 2

	English		Maths	
Level	4+	5+	4+	5+
% of pupils in St Brigid's achieving	100.00		64	
Level	4+	5+	4+	5+
% of pupils in NI achiev-ing	82.03	32.51	82.97	42.83

We are immensely proud of the children's achievements and the quality of the teaching and learning in our school.

HOMEWORK

Homework provides an important link between home and school.

It gives parents an opportunity to see what is happening in school and to share in their children's learning experiences. It also provides an opportunity for children to develop further independence in their own work. We encourage parents to become involved in their children's homework and ensure it is completed each night. We also encourage children to take responsibility for their own homework and learning. Parents should contact the school if there are any difficulties concerning homework.

Homework for the Foundation Stage

Homework for the younger children will consist of Literacy and Numeracy.

Homework for Key Stages 1 and 2

Homework for the older children will also consist of Literacy, including Spellings as well as Numeracy.

All children are encouraged to read every weeknight. Listening to your children read aloud is important right through to P7. Remember children are never too old to enjoy a book with an adult. We would highly recommend this on a daily basis!





After school activities

3.15-4.15



We have fun at Altamuskin



Playing Hurling



Playing football



From the School Pitch to Healy Park and Croke Park

Taking part in drama and Feis





Two O'Clock club

Children in Primary 1 and 2 in other primary schools like to go home at 2 o'clock, but the children at St. Brigid's would rather stay all day!

St. Brigid's primary school Altamuskin offers primary 1 and 2 children the opportunity to stay at "The Two O'clock Club" from 2 o'clock (the normal home time for this age group) until 3.15 in the afternoon.

Miss O'Neill plans play based activities for the children, including; art and crafts, computer club, fit club and big book club. But this only takes place after they have a snack to keep their energy up after a hard day's work.



Home/School Links

The school welcomes parents and strives to ensure that good relationships exist between Parents and staff. Parents are kept fully informed of everything going on in the school through newsletters and parent information leaflets. We also provide a text messaging service for parents whereby we will text you and let you know of any important events coming up in the school e.g. Assemblies, Christmas Shows, etc. If a parent has any concerns they can contact the school—all contact details are at the back of this prospectus.

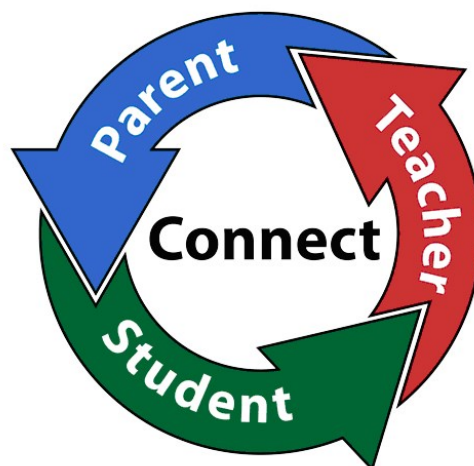
The school has a comprehensive website that keeps parents and all stakeholders involved in our everyday life at St.Brigid's P.S., Altamuskin:

<http://www.stbrigidspsaltamuskin.com/>

The school prides itself on having good relationships with all parents and invites all parents to become fully involved in the life of the school.

Annual Parent Teacher Meetings are organised to discuss the educational progress of their child in term 1. Parents have other opportunities to learn about and take part in many school events throughout the year:

- ♦ Sacramental Preparation Programmes
- ♦ Year 1 Information Evening
- ♦ Paired Reading Programme (being introduced this year)
- ♦ Class Assemblies and Invitations to other school functions
- ♦ School Plays
- ♦ Sports Day
- ♦ Text System
- ♦ School Newsletters
- ♦ School Masses
- ♦ Prize-giving/Graduation Dinners
- ♦ WEBSITE
- ♦ SEN Meetings



Student Council

At St. Brigid's Primary School we believe that all children should have a voice and a say in the decisions we make about school life, so last year we established a Student Council. School councils contribute to positive changes in the lives of every child in the school. Involving pupils in real issues helps them to develop important life skills that promote positive mental health and social welfare-emotional literacy, critical and moral reasoning, self -esteem, self -awareness, communication skills, relationship skills and assertiveness. The school council, which meets regularly, is made up of democratically elected pupils from each class. The elected pupils represent the views of their own class at the school council meeting and then report back to their class on the outcome. children from P1-P7 are involved.

This year the council organised wheelchair access, new tarmac and painted games on our playground. They designed new school jerseys , among other exciting activities too-log on to the Irish TV link on our school website to see them in action!



PASTORAL CARE/CHILD PROTECTION

School Overall attendance

2014-15 96%

The Governors and Staff of St. Brigid's Primary School acknowledge the statutory requirements of the Children's Order and its implications for schools. We recognise that the quality of pastoral care is of crucial importance in creating an atmosphere in which children feel secure, know that they are valued as individuals, and are encouraged in their learning, growth and social development in a healthy and safe environment.

At St. Brigid's staff hope that parents and pupils feel free to talk about any concerns and see the school as a safe environment.

Staff who observe injuries, which appear to be non-accidental, or who are told anything significant by a pupil, must report their concerns to Mrs. Gormley who is the designated teacher for Child Protection or in her absence Miss Mc Nulty. The underlying concern of the school is the safety of the children. Children's worries and fears will be taken seriously if they seek help from a member of staff.

Referrals will be made to the appropriate agencies in order to safeguard the child's welfare if the designated teacher for Child Protection Mrs Gormley is at all concerned. When a child is sick or injured the school will attempt to contact the parents to come to the school. If this is not possible the child will be brought to hospital. In less severe cases the emergency contact you provide will be used. In all cases it will be school policy to act in the best interests of the child.

Copies of the school's Anti-bullying & Child Protection/Safeguarding Policies are distributed to all families and are available for parents in the principal's office. Or on our school website <http://stbrigidspaltamuskin.com/>

Home - School Communication

It is our policy to have open and positive communication with parents and guardians. Teachers will happily arrange to meet parents at mutually convenient times.

In addition we have more formal opportunities throughout the school year for parents to meet staff:

Autumn Term

□ Individual parent/teacher meetings in October/November

Summer Term

□ Formal written reports

□ Induction Mornings for new Nursery and Primary One Pupils and their parents in May/June.

PROCEDURE FOR REPORTING A SAFEGUARDING ISSUE AT



Child makes a disclosure to teacher or teacher has concerns about a child either as a result of one observation or many observations over a period of time. Teacher should make notes of what was said or observed and must **ACT PROMPTLY**.



Teacher refers matter to designated teacher for Safeguarding, Mrs Gormley, who makes full notes.

*In Mrs Gormley's absence Miss Mc Nulty



If there is a Child Protection/ Safeguarding concern the Designated Teacher will make a referral to:

- **WHSCOT GATEWAY**
Telephone 028 71314090
- **EANI CPSSS**
Designated Officer

A UNOCINI referral form will be completed.



If there is any doubt about whether to take further action, advice is available from:

- **EANI CPSSS**
Designated Officer

When seeking such advice no names need be given. One is simply making an enquiry.



Mrs Gormley
Designated Teacher
For Safeguarding



Miss Mc Nulty
Deputy
Designated Teacher



Kevin Conroy
Designated Governor
for Child Protection



Fr. M O'Dwyer
Chairperson of
BOG



How a Parent can make a Complaint

I have a concern about my/a child's safety



I can talk to the class teacher



If I am still concerned, I can talk to the
designated teacher for child protection
Mrs Gormley, the deputy designated teacher
Miss Mc Nulty



If I am still concerned, I can talk/write to
the
Chairman of the Board of Governors,
Fr Michael O Dwyer



At any time a parent can talk to a social worker at the

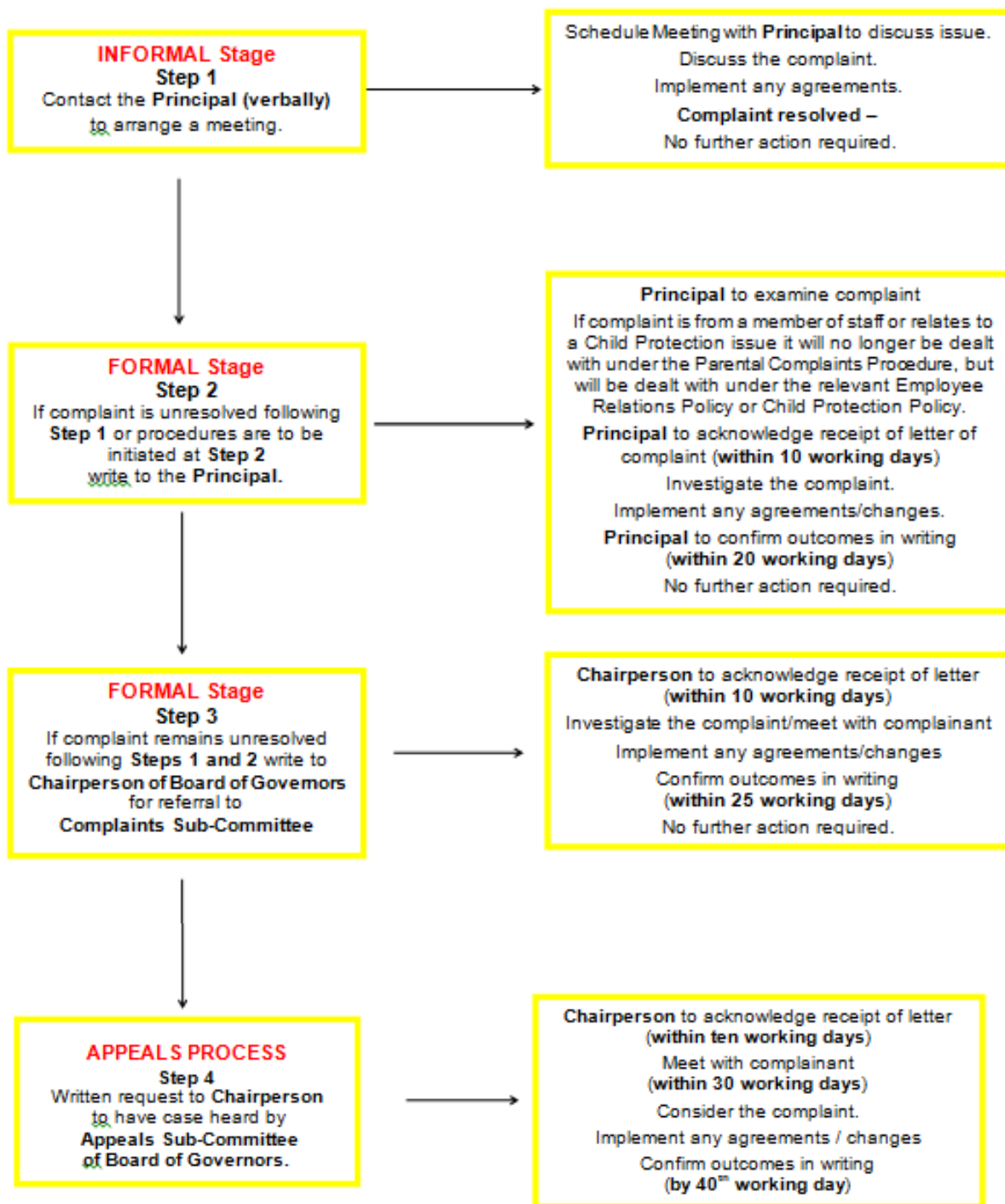
Gateway Team **Tel: 0800 7837745**

or the

PSNI Public Protection Unit Tel : 0845 600 80000



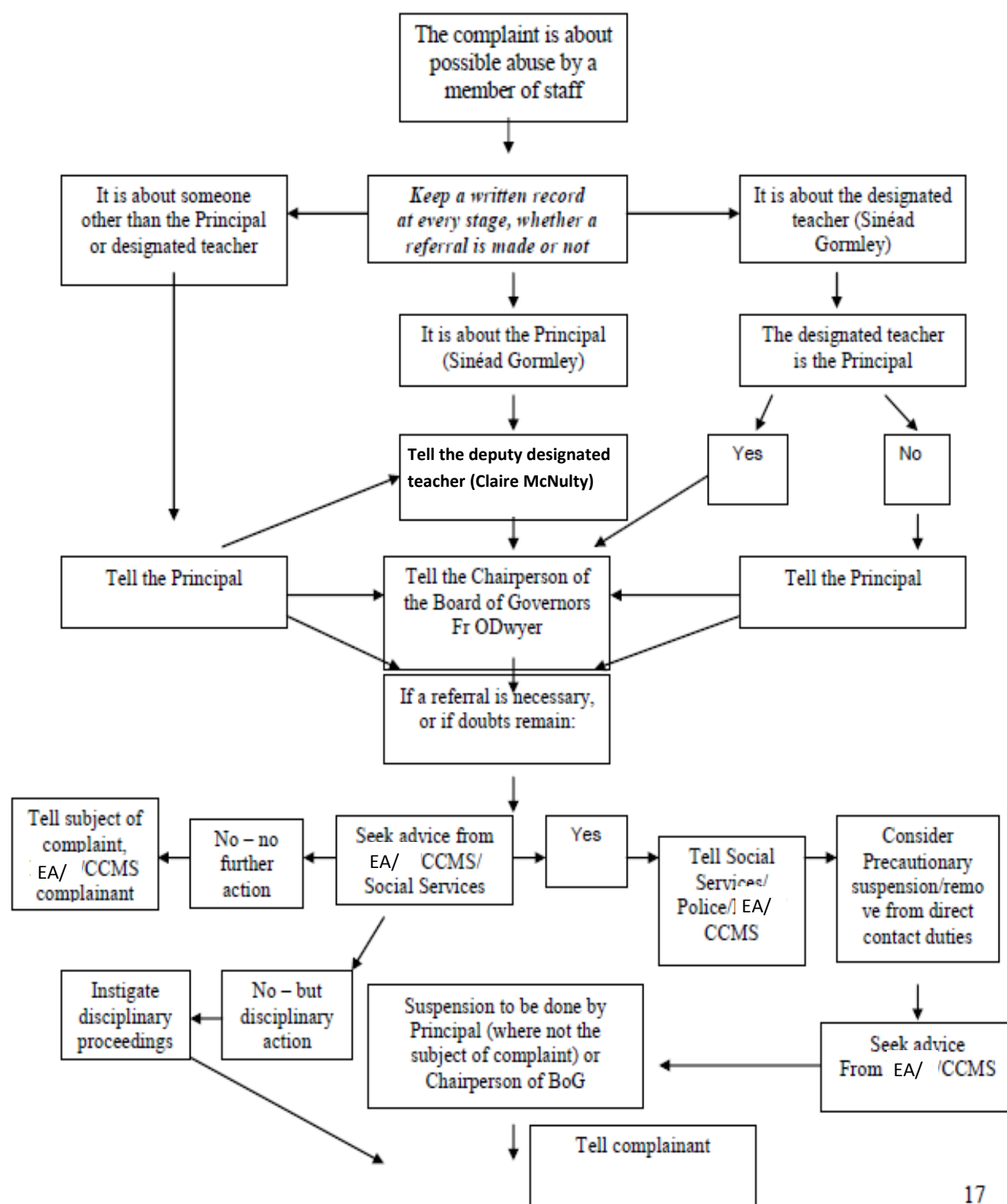
Making a complaint about a member of the school's support staff *(with timescales for responses)*





Appendix 4

Procedure where a complaint has been made about possible abuse by a member of the school's staff





Principal: Sinéad Gormley

St. Brigid's Primary School,

114 Altamuskin Road,

Sixmilecross,

Co Tyrone BT79 9JA

E-mail: sgormley238@c2kni.net

Mob: 07980979390

Phone: 028 807 58386

Fax: 028 807 57711

Catholic Maintained

Co-Educational

Age Range 4-11

Roll: 58

Admission No. 11

Enrolment No. 80

Chair of the Board of

Fr M.O'Dwyer

FURTHER INFORMATION

The Board of Governors of St. Brigid's Primary School realise that the information given in this prospectus is limited and parents are welcome to make arrangements with the principal to visit the school for further information. Copies of previous inspection reports and curriculum policies are available in the principal's office.

**School Text service keeping you up to date
with daily events and activities:**

07980979390

[Check out our School Website](http://www.stbrigidspsaltamuskin.com)

www.stbrigidspsaltamuskin.com

Or just 'Google'; Altamuskin

